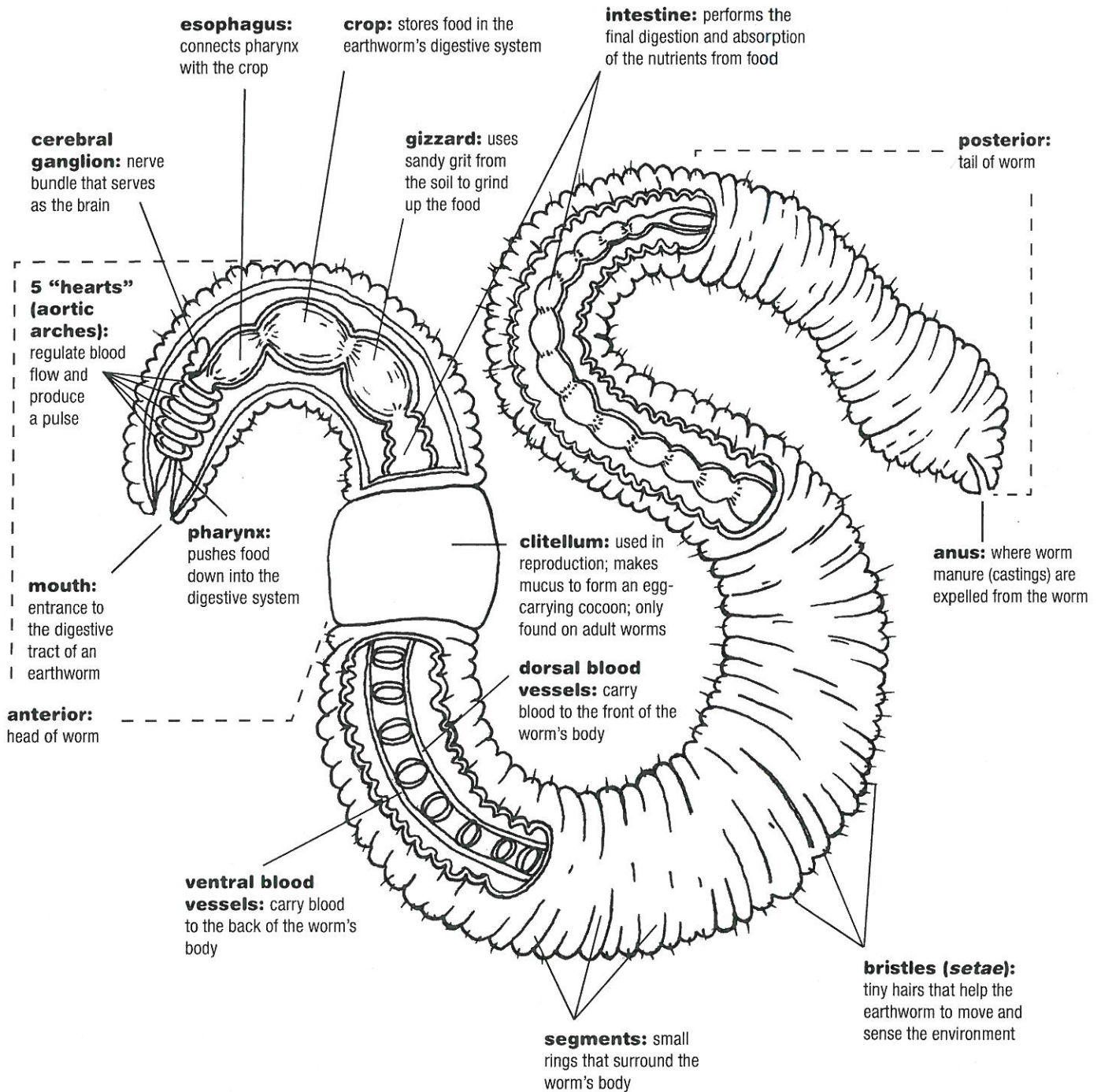


Seattle Tilth Master Composter/Soil Builder Tip Sheet

The Master Composter/Soil Builder program is managed by Seattle Tilth and sponsored by Seattle Public Utilities.

color a wiggly worm!

Color in the *Eisenia fetida* (red worm) image below to help you to identify the various parts of the worm.



Seattle
Public
Utilities

MASTER **composter**
soil **BUILDER**



This Tip Sheet has been adapted from the NYC Compost Project, *New York City Master Composter Manual*, 2012. Reprinted with permission from the NYC Department of Sanitation's Bureau of Waste Prevention, Reuse and Recycling.